

**Be grateful
to our customers, partners.**

**Be grateful to colleagues
and the previous generation.**

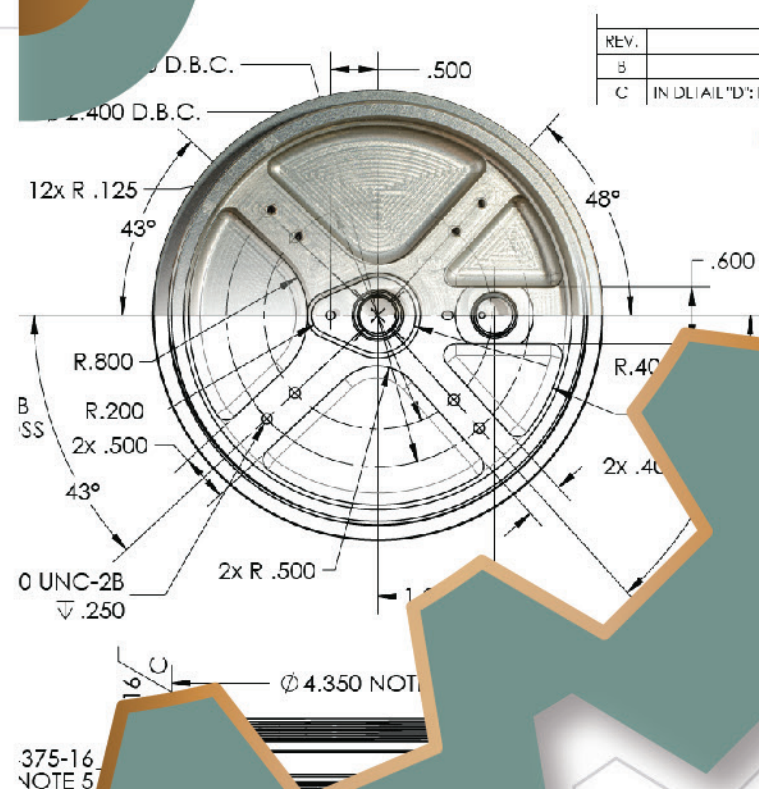
THANK YOU!

We always ensure the prestige and quality
and especially always be on time and always
satisfy and appreciate customers' opinions.
We always to support your success!

MTS VIETNAM CO.,LTD

Factory: 248/10, DT743A Street, Binh An Ward, Di An City, Binh Duong Province
Tel/zalo/viber: 0908 345 109
Email: phanhoang@mtsvietnam.vn
info@mtsvietnam.vn
Website: www.mtsvietnam.vn
Fanpage: MTS Viet Nam – Precision machining

G0 G54 G90 X - 35 . 002
G42 H2 Z23 . 894
M0
Z24 . 894
G1 Z14 . 894 F5000
X - 35 . Z14 . Y - 427 F2000
X - 35 . 51 Y . 064
.011 Y . 065
Y . 036 Z14 . 9 C - 91 . 294 B - 31 . 304
Y . 056 Z14 . 904 C - 92 . 571 B - 31 . 31
Y . 095 Z14 . 913 C - 93 . 876 B - 31 . 325





Company	MTS VIET NAM MANUFACTURING TRADING SERVICES CO., LTD
Code	0314220214
Location	Lot 31- 34, 245 Street, Tan Phu Ward, Thu Duc City, HCM City
Established	2017.02.07
Field Working	Processing machine parts and assembly
Certification	ISO 9001-2015

3 STRENGTHS



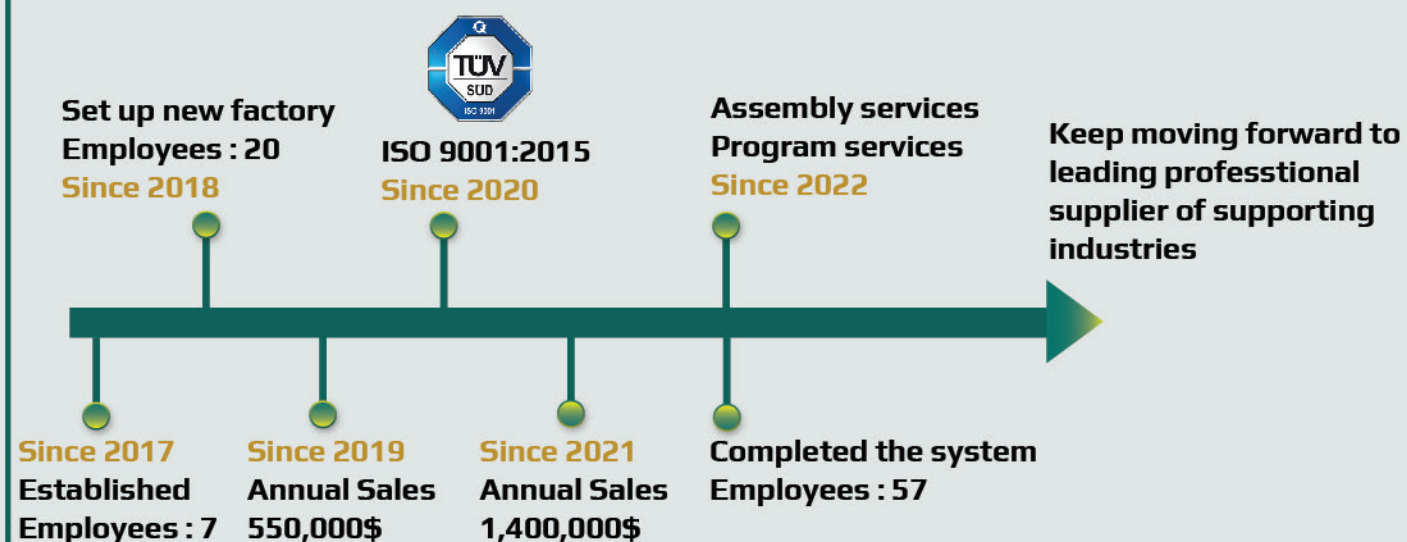
Why choose us?

1 Quality: The process of input materials, production, inspection is carried out according to ISO 9001:2015 high standard certified by TUV organization. In addition, We control parts' dimension according to JIS, DIN 2768 standard. MTS always focuses on investing in new technology and quality control equipment. So we can ensure products quality and stability for our customers.

2. Prices: MTS is a local company. We have young staffs with the high passion for technical work, and can work 24h per day. So we can supply merchandise with suitable prices and deliver in time deadline.

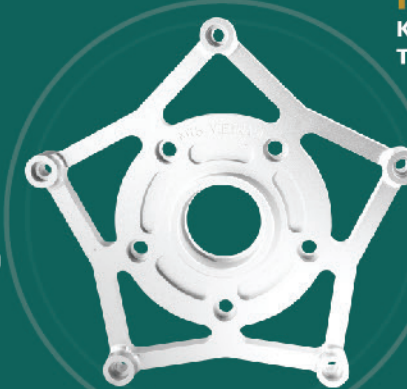
3. Combo service: We can supply you various parts such as CNC parts, sheet-metal parts, surface treatment parts and assembly service.

COMPANY HISTORY



Method: we always apply new technology - change it to become our technical know-how

Machine:
80% new machine
so we can control accurate
0.005-0.020



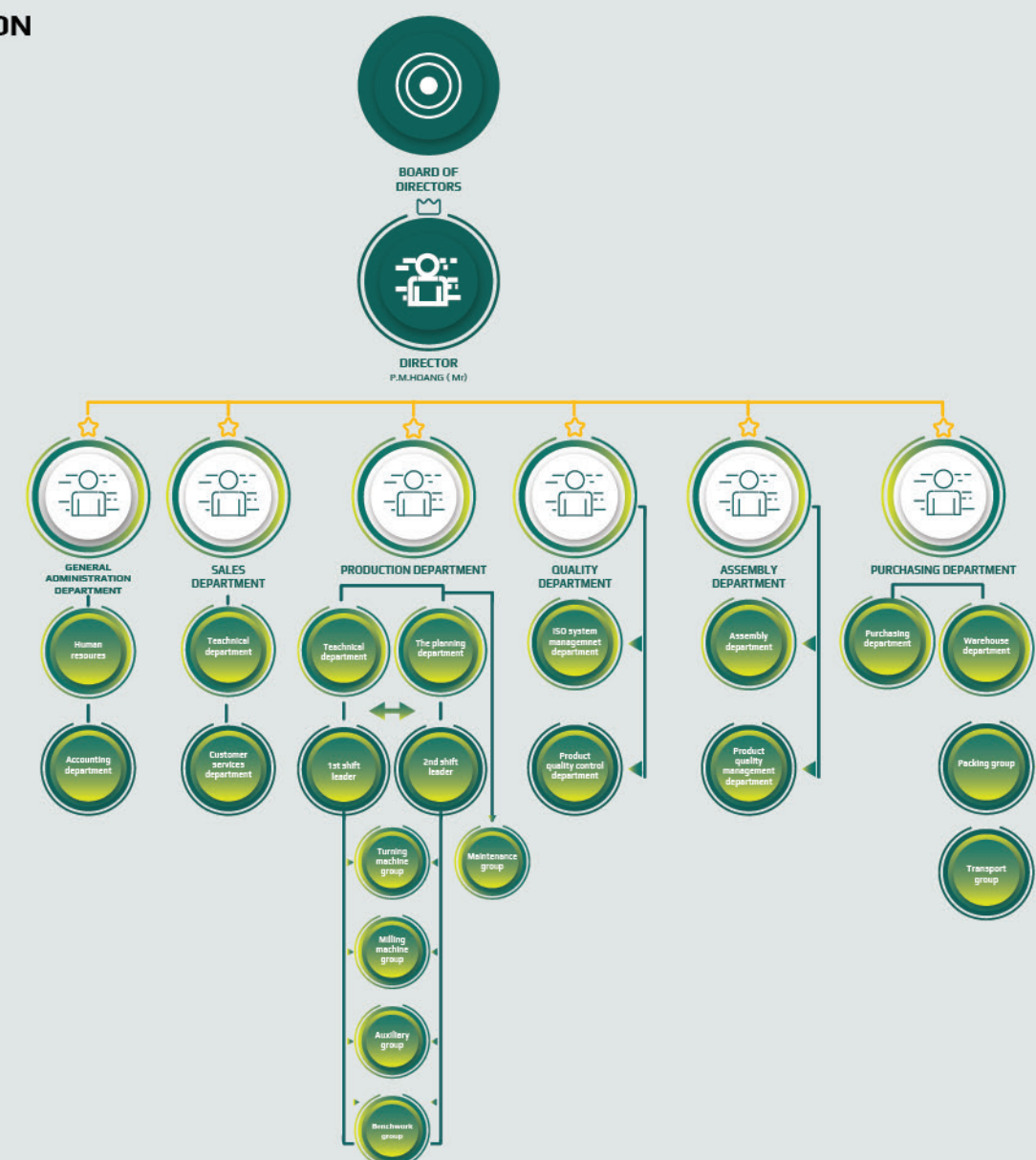
Materials: from Japan, Korea, Europe, China, Taiwan,...

Aluminum : A6061, A5052, A7075, A6063, ACP 6000, ...
Steel: S5400, S20C, S45C, S50C, 4130, 4140, ...
Stainless: SUS303, SUS304, SUS316, SUS440, SUS17-4, ...
Non-metal: POM, PMMA, PC, PA, PEEK, ...

Man: We are experienced team with high passion in work

Management: We always update knowledge management system.

ORGANIZATION



We are the combination of experienced profession and enthusiastic young team. The diversity of our staffs are values that help us not only have knowhow but also more and more creative.



The more enthusiastic we are, the more productive we become. The more serving we are, the more prosperous we become.



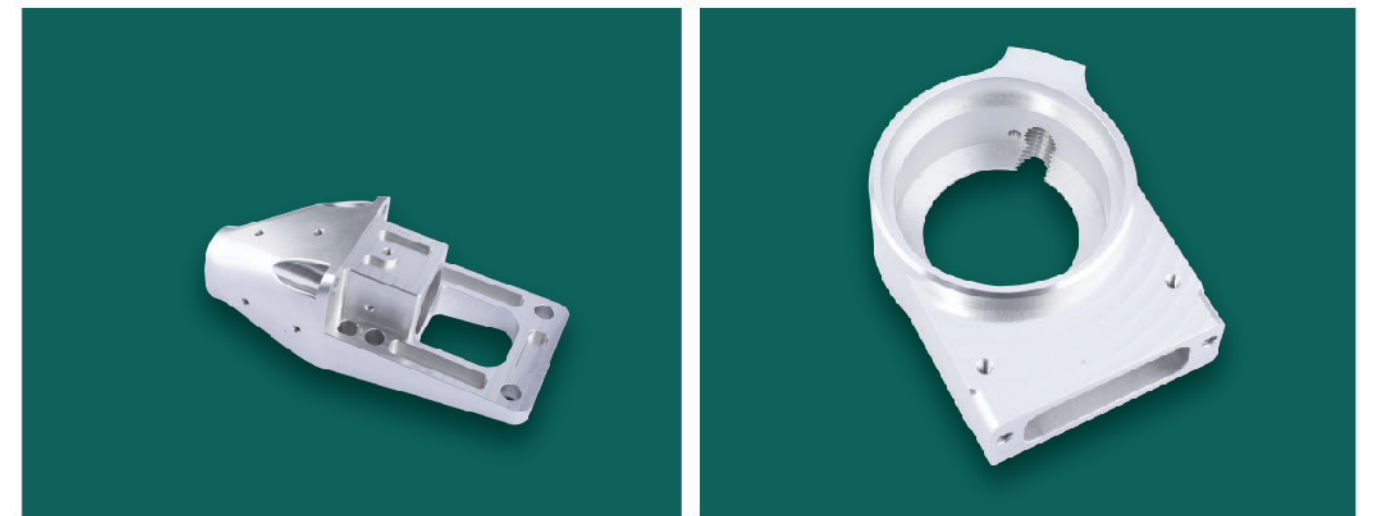
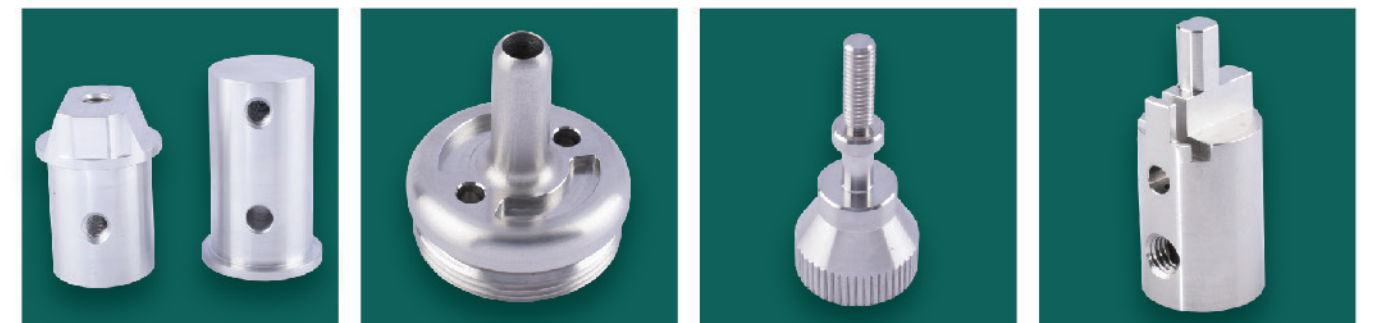
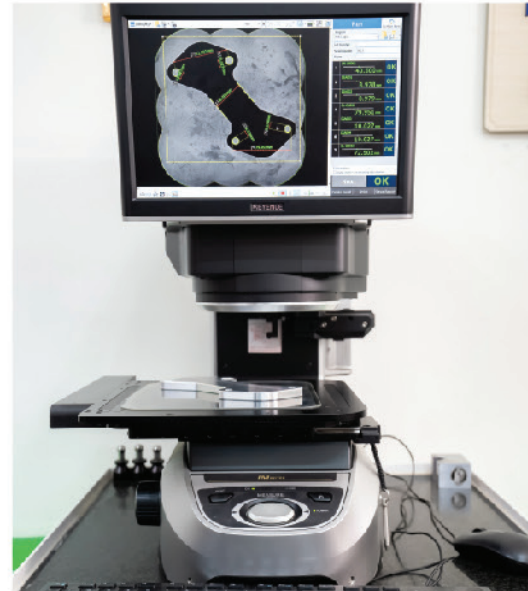
03

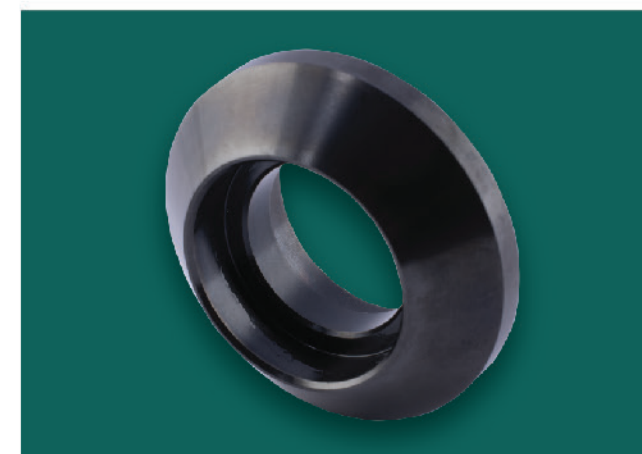
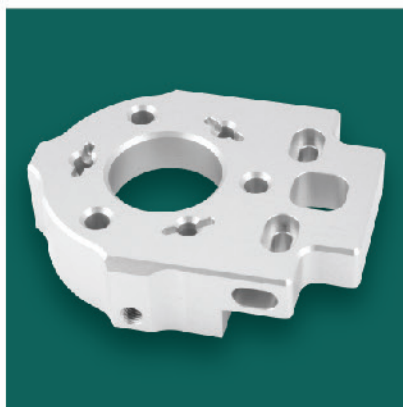
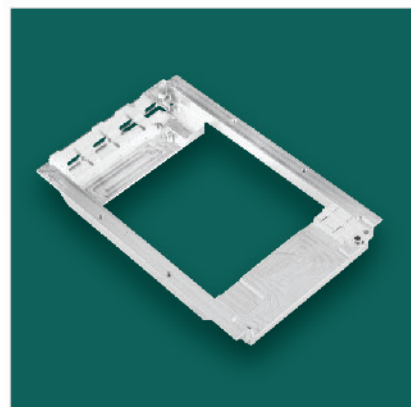
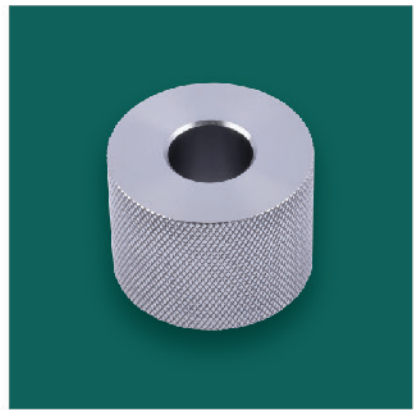
MACHINES

Item	Machine	Model	Working Size	Quantity	Accuracy of bidirectional axis positioning (mm)	Manufacturing Year	Origin Country
PROCESSING MACHINE							
1	Milling OKUMA MU-400V (Full 5 axis)	MU-400V	X400 Y400 Z300	1	0.006 - 0.010	2022	Japan
2	Milling OKUMA MB-46 (4 axis)	MB-46	X600 Y400 Z301	1	0.006 - 0.010	2024	Japan
3	Milling BROTHER M300X3 (4+1 axis)	M300X3	X500 Y400 Z300	1	0.006 - 0.010	2022	Japan
4	Milling BROTHER U500Xd1 (4+1 axis)	U500XD1	U500XD1	1	0.006 - 0.010	2022	Japan
5	Milling DMG (3+2 axis)	DMU50	X500 Y500 Z300	1	0.020 - 0.040	2022	Germany
6	Milling MAZARK VCN-430AL	VCN-430AL	X500 Y450 Z400	1	0.006 - 0.010	2022	China
7	Milling BROTHER S500X1	S500X1	X500 Y350 Z300	2	0.006 - 0.010	2024	Japan
8	Milling BROTHER S700X2	S700X2	X700 Y400 Z301	1	0.006 - 0.010	2020	Japan
9	Milling BROTHER R450X1	R450X1	X400 Y250 Z300	1	0.006 - 0.010	2019	Japan
10	Milling Robodrill α14Mi	α14Mi	X400 Y250 Z300	1	0.006 - 0.010	2018	Japan
11	Milling HAAS VF2	VF2	X600 Y450 Z400	1	0.006 - 0.010	2018	USA
12	Milling HAAS VF2	VF2	X600 Y450 Z400	1	0.006 - 0.010	2019	USA
13	Milling HAAS VF4	VF4	X1200 Y550 Z400	1	0.006 - 0.010	2018	USA
14	Milling Taikan 856S	856S	X900 Y500 Z400	7	0.010 - 0.020	2023	China
15	Milling OKUMA	MILLAC 468v	X800 Y600 Z400	1	0.010 - 0.020	2003	China
16	Milling OKUMA	MILLAC 415v	X600 Y450 Z400	1	0.010 - 0.020	2005	Japan
17	Milling PRATIC	PA4900S-2W	X2000 Y400 Z500	2	0.010 - 0.021	2024	Japan
18	Turning OKUMA Genos L200E-M	Genos L200E-M	X200 Z450	5	0.006 - 0.010	2019	Japan
19	Turning MAZARK QT8	MZ QT8	X150 Z200	2	0.010 - 0.020	2000	Japan
20	Turning MAZARK QT 6T	MZ QT 6T	X150 Z200	1	0.006 - 0.010	2006	Japan
21	WIRE CUT MAKINO W32FB	W32FB	X300 Y200 Z300	1	0.003 - 0.010	2015	Japan
22	WIRE CUT SODICK AQ325L	AQ325L	X350 Y250 Z300	1	0.003 - 0.010	2004	Japan



	Machine	Model	Working Size	Quantity	Accuracy of bidirectional axis positioning (mm)	Manufacturing Year	Origin Country
MEASURING EQUIPMENT							
1	3D CMM MITUTOYO CRYSTAL 574	CRYSTAL 574	X500 Y700 Z400	1	$(3.5+4.0L/1000)\mu\text{m}$	2019	Japan
2	Height Gauge MITUTOYO QM-LH600	QM-LH600	Z600	1	$(1.1+0.6L/1000)\mu\text{m}$	2018	Japan
3	Height Gauge MITUTOYO LH-600	LH-600	Z600	1	$(1.1+0.6L/1000)\mu\text{m}$	2020	Japan
4	KEYENCE Image Measure	IM8020	X200 Y200	1	$(8+0.02L/1000)\mu\text{m}$	2021	Japan





06 DEVELOPMENT FIELDS

3/4/5 axis, CNC milling,
NC turning, Wire cut EDM

PRECISION MACHINING

Modular, Electromechanical Assy,
Mechatronics, Testing

ASSEMBLY AND TESTING



MACHINING MATERIALS

Ferrous, Engineering Plastic, Aluminum,
Stainless Steel, Steel



VALUE ADDED SERVICES

Rapid prototype, Jig & Fixture, Engr,
Sourcing for Alu Casting, Plastic injection,
Aluextrusion, Sheet metal, Weldment Frame

07 OUR CO-OPERATION PARTNERS

Automatic Lathe (Swiss Lathe) Field	
1 Workshop size	1,200m2
2 Machine Quantity	30
3 Diameter product	2 ~ 32mm
4 Length Max	500mm



	Sheetmetal Field		
1	Workshop size	1,000m2	
2	Laser Cutting Machine	1500mm x 3000mm	t0.2 ~ 18mm
3	CNC Bending	550mm x 3200mm	t0.5 ~ 4mm
4	Welding	TIG - MIG - Spot	



08 OUR SUPPLIERS



Our partners are the reputable customers, suppliers in the markets. They have always supported and helped us from the early day operated. With our activity motto" More than your expectation" we aim the target sustainable development of company, we undertalking that supply the best quality of products a services from customers' development and success.

